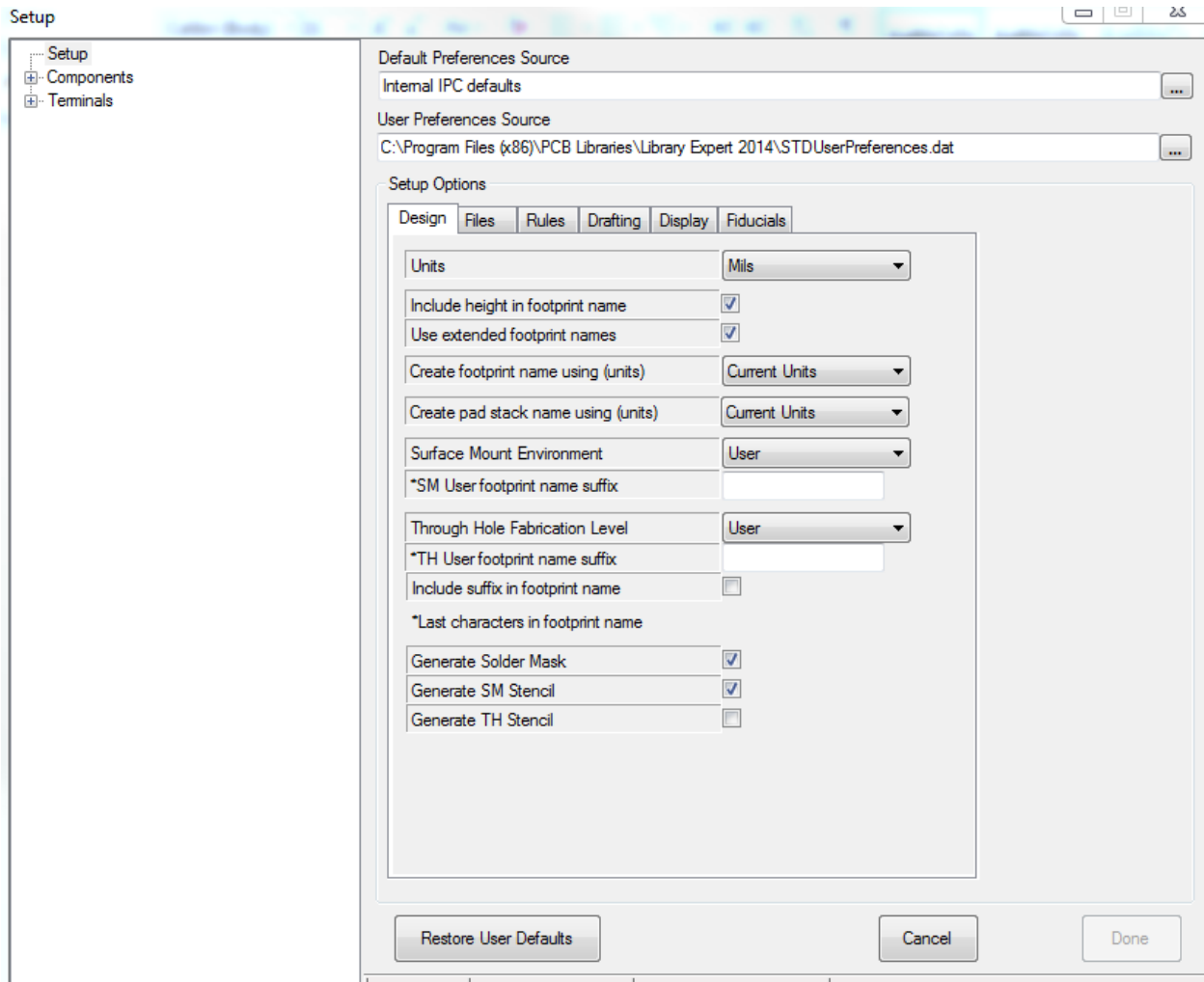
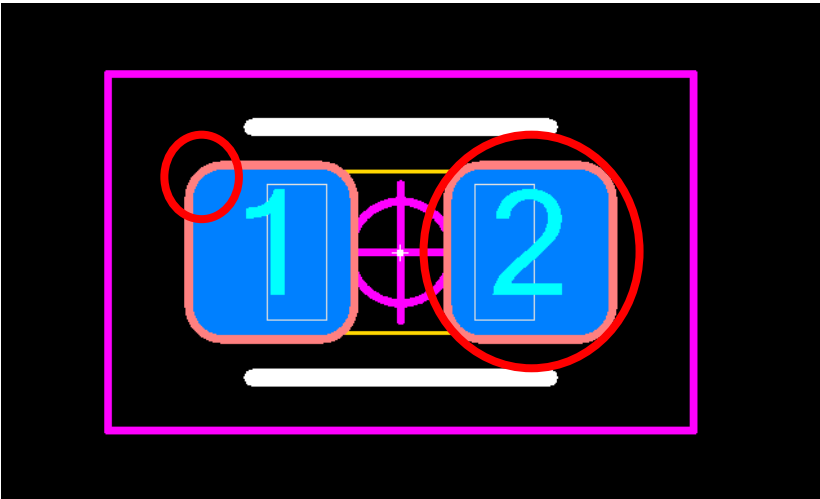


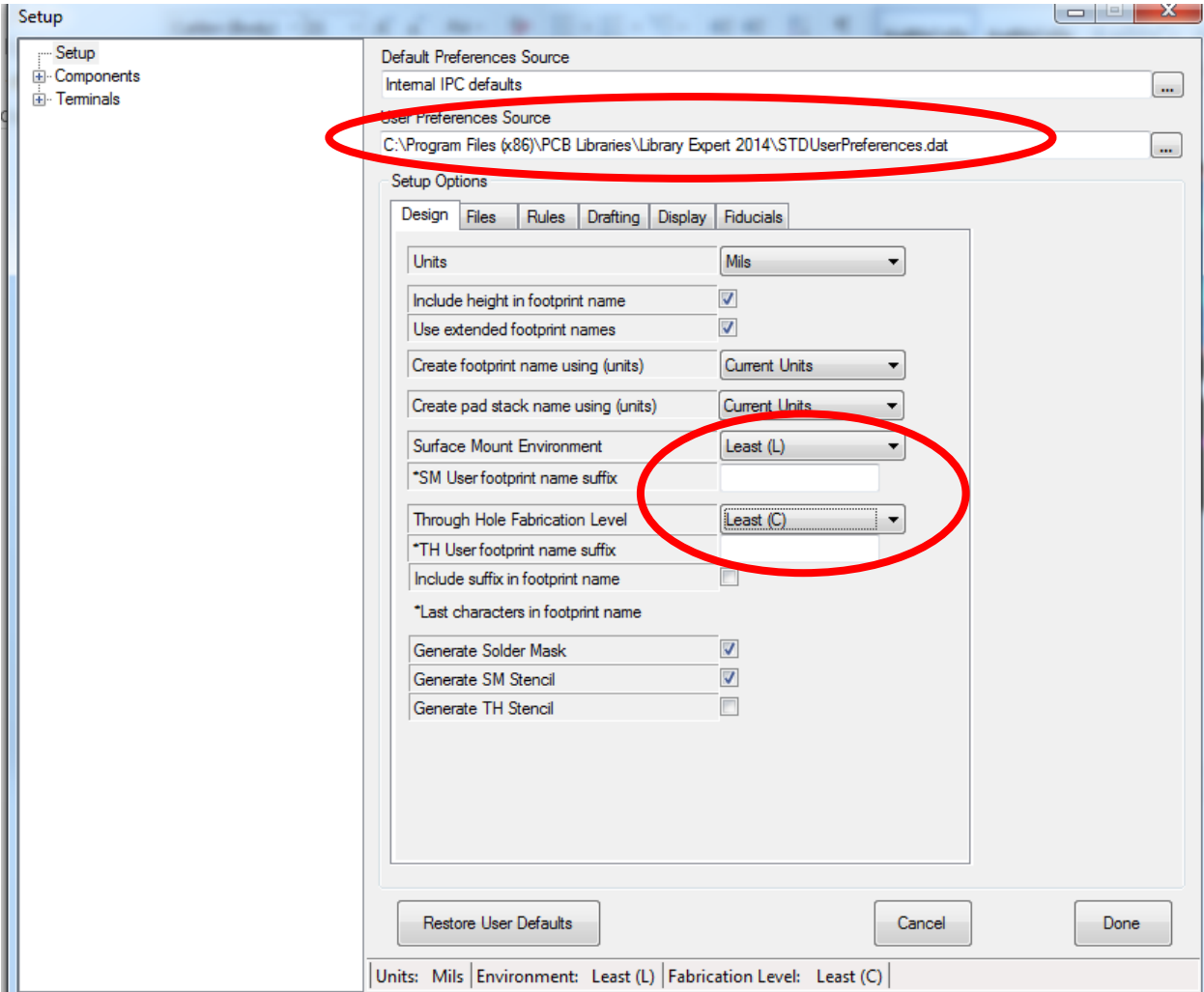
OUR USER PREFERENCES THAT MOSTLY CHANGE THE MASK EXPANSION, COURTYARD AND PAD SHAPE.



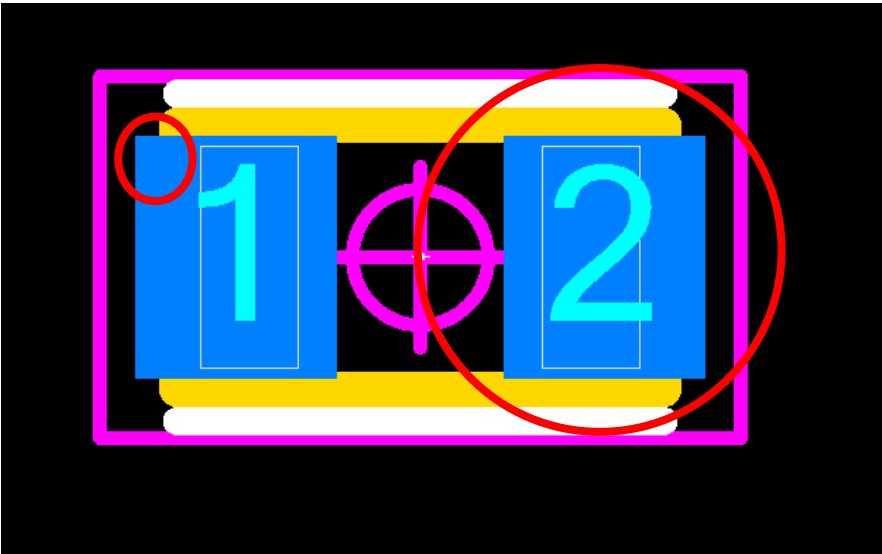
EXAMPLE OF HOW IT REFLECTS



WHEN WE CHANGE JUST THE “ENVIROMENT AND FABRICATION LEVEL” BUT LEAVE OUR USER PREFERENCES IN , IT SHOULD ONLY CHANGE THE ENVIROMENT LEVEL, BUT INSTEAD IT OVERWRIGHTS OUR PREFERENCES AND MAKES IT DEFAULT LIKE...



HOW IT REFLECTS



NOTICE HOW THE PAD SHAPE AND SOLDER MASK EXPANSION USER PREFERENCES ARE LOST!!!