

| X1-DFN1006-2 | | | |
|----------------------|------|-------|------|
| Dim | Min | Max | Typ |
| A | 0.47 | 0.53 | 0.50 |
| A1 | 0 | 0.05 | 0.03 |
| b | 0.45 | 0.55 | 0.50 |
| D | 0.95 | 1.075 | 1.00 |
| E | 0.55 | 0.675 | 0.60 |
| e | - | - | 0.40 |
| L | 0.20 | 0.30 | 0.25 |
| R | 0.05 | 0.15 | 0.10 |
| All Dimensions in mm | | | |

Dimensions

Settings

3D Colors

Family

Diode

Pitch (e)

0.65

Set tab stops for:

☐ Nom/Tol
 ☐ Min/Max
 ☒ Req'd.

| Ref. | Nom | - Tol | + Tol | Min | Max |
|------|-------|--------|-------|--------|---------|
| A | | | | | * 0.53 |
| b | 0.50 | -0.05 | 0.05 | * 0.45 | * 0.55 |
| D | 1.013 | -0.063 | 0.063 | * 0.95 | * 1.075 |
| E | 0.613 | -0.063 | 0.063 | * 0.55 | * 0.675 |
| L | 0.25 | -0.05 | 0.05 | * 0.20 | * 0.30 |

* Required entry

Preference settings.

- Rules
 - Drafting
 - Fiducials
 - 3D Colors
- Components
- Terminals

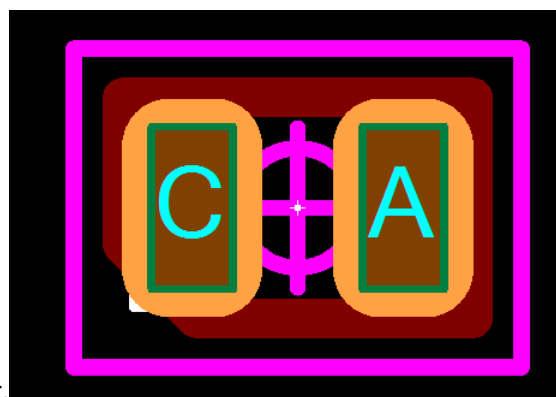
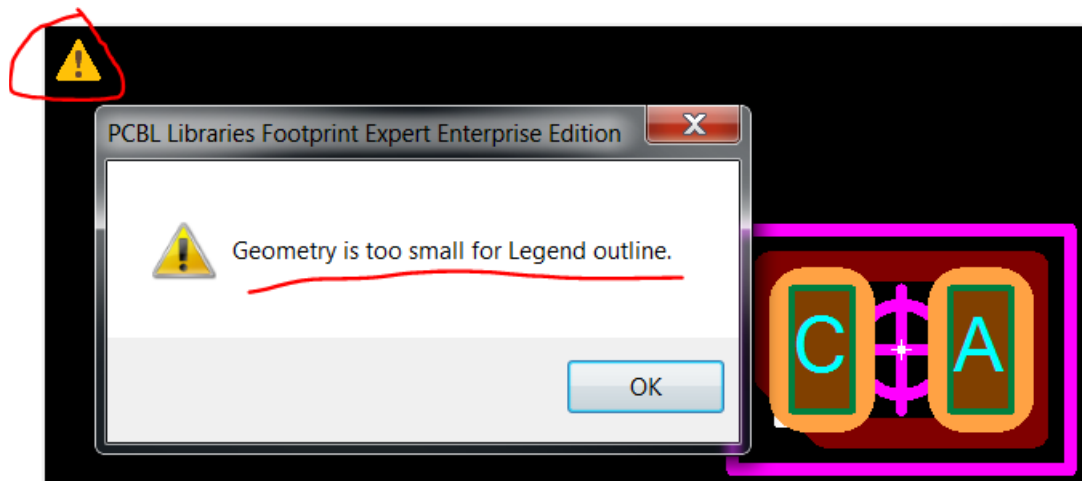
Drafting Options

Legend Assembly Courtyard Component

| | |
|-----------------------------------|-------------------------------------|
| *Outline Width | 0.12 |
| *Map Outline to Body | Maximum |
| *Clearance | 0.15 |
| *Outline Placement Roundoff | 0.01 |
| *Ref. Des. Height | 1.00 |
| Ref. Des. Width (% of Height) | 10 |
| *Pin 1 Dot Size (not-to-exceed) | 0.00 |
| Autogenerate Pin 1 Indicator Line | <input checked="" type="checkbox"/> |

*Subject to changes in Density Level

Restore Default Legend



No Polarity bar.

Once the dot for polarity is turned on in preference.... Diodes and Pol-Caps do not look good with a dot since pkg itself has polarity bar on component.(Just my preference).

